



32  
 REVISED LAY-OUT FOR  
 S.NO 144/1P & 3P OF YENDADA  
 VILLAGE BELONGS TO  
 SANTHINIKETAN CO-OP. H.B  
 SOCIETY - VISAKHAPATNAM.

LAND-USE ANALYSIS

SL NO	DESCRIPTION	AREA IN ACS-CT	PERCENTAGE
1	PLOTTED AREA	0.79	63.20
2	ROADS AREA	0.33	26.40
3	OPEN SPACE AREA	0.13	10.40

TOTAL EXTENT: 1.25 100.00

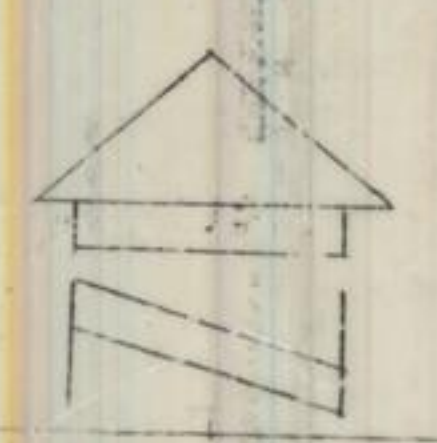
— LAY-OUT BOUNDARY

SL-NO	SIZE OF PLOTS	NO. OF PLOTS
1	40'0" X 70'0"	8
2	40'0" X 60'0"	4

TOTAL NO. OF PLOTS 12

NOTE:- THE SOCIETY SHOULD FORM APPROACH ROAD @ TO @ AS PER STANDARD SPECIFICATIONS DULY OBTAINING PERMISSION FROM REVENUE AUTHORITIES

SCALE: 1 INCH = 66 FEET  
 FILE R.C. NO.: 3062/93 H3  
 L.P. NO. 15/93  
 (BLP 1/92)



A. D. M.

Chief Planning Officer

Asst. Planning Officer

Chief Planning Officer

Vice Chairman

VISAKHAPATNAM URBAN DEVELOPMENT AUTHORITY.