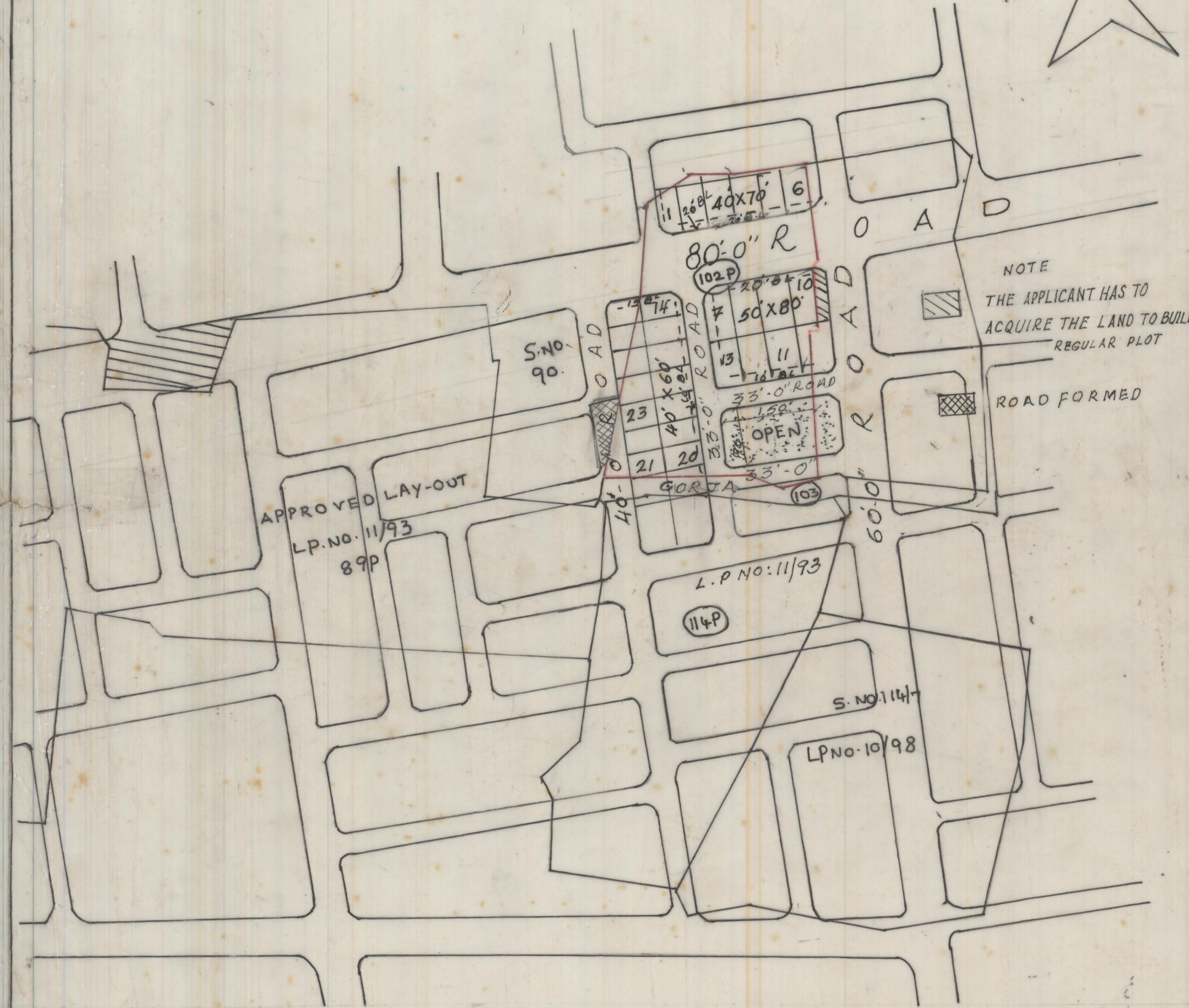




REVISED LAYOUT IN S.NO
102/1,4,687 PART OF
MADHURAWADA VILLAGE
VISAKHAPATNAM DISTRICT
BELONGS TO SRI M.LAKSH-
MIPATHY



LAND USE ANALYSIS

SL. NO	DESCRIPTION	EXTENT ACCT	PERCENTAGE
1.	PLOTTED AREA	1.59	56.99
2	ROADS AREA	0.91	32.62
3	OPENSACE AREA	0.29	10.39
TOTAL EXTENT OF LAY-OUT		2.79	100.00

LAY-OUT BOUNDARY

SL. NO.	SIZE OF PLOTS	NO OF PLOTS
1	50'-0" X 80'-0"	7 NOS
2	40'-0" X 70'-0"	6 NOS
3	40'-0" X 60'-0"	10 NOS
TOTAL NO OF PLOTS		23 NOS

SCALE: 1" = 132'-0"
FILE: R.C. NO. 1761/93 GA
VUDA R. NO 518 dt 27-1-94
L.P. NO: 19/95 (BLP 43/94)

ASST. PLANNING OFFICER

ch. Ramasudham
A.D.M
11-9-95

CHIEF PLANNING OFFICER

JUNIOR PLANNING OFFICER

VICE - CHAIRMAN

VISAKHAPATNAM URBAN
DEVELOPMENT AUTHORITY