


SUGGESTNE LAY-OUT PLAN IN SURVEY NO 45/9 & 49/2 OF AGANAMPUDI (V) FOR MODERN HOME

LANDUSE ANALYSIS

TOTAL EXTENT OF LAY-OUT	AC. 1.25	
PLOTTED AREA	AC. 0.75	60.0%
ROADS AREA	AC. 0.47	37.6%
OPEN SPACE AREA	AC. 0.03	2.4%
	AC. 1.25	100.00%

SCALE 1"=66'



FILE R.C. NO. 2083/86/63
(BLP NO. 9/87)
L.P. NO. 58/89

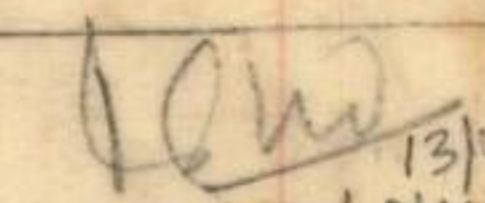
— LAY OUT BOUNDARY

▨ LAND TO BE ACQUIRED FOR THE CONSTITUTE OF REGULAR S.

▨ LAND TO BE DISPOSED TO THE OTHER PARTY

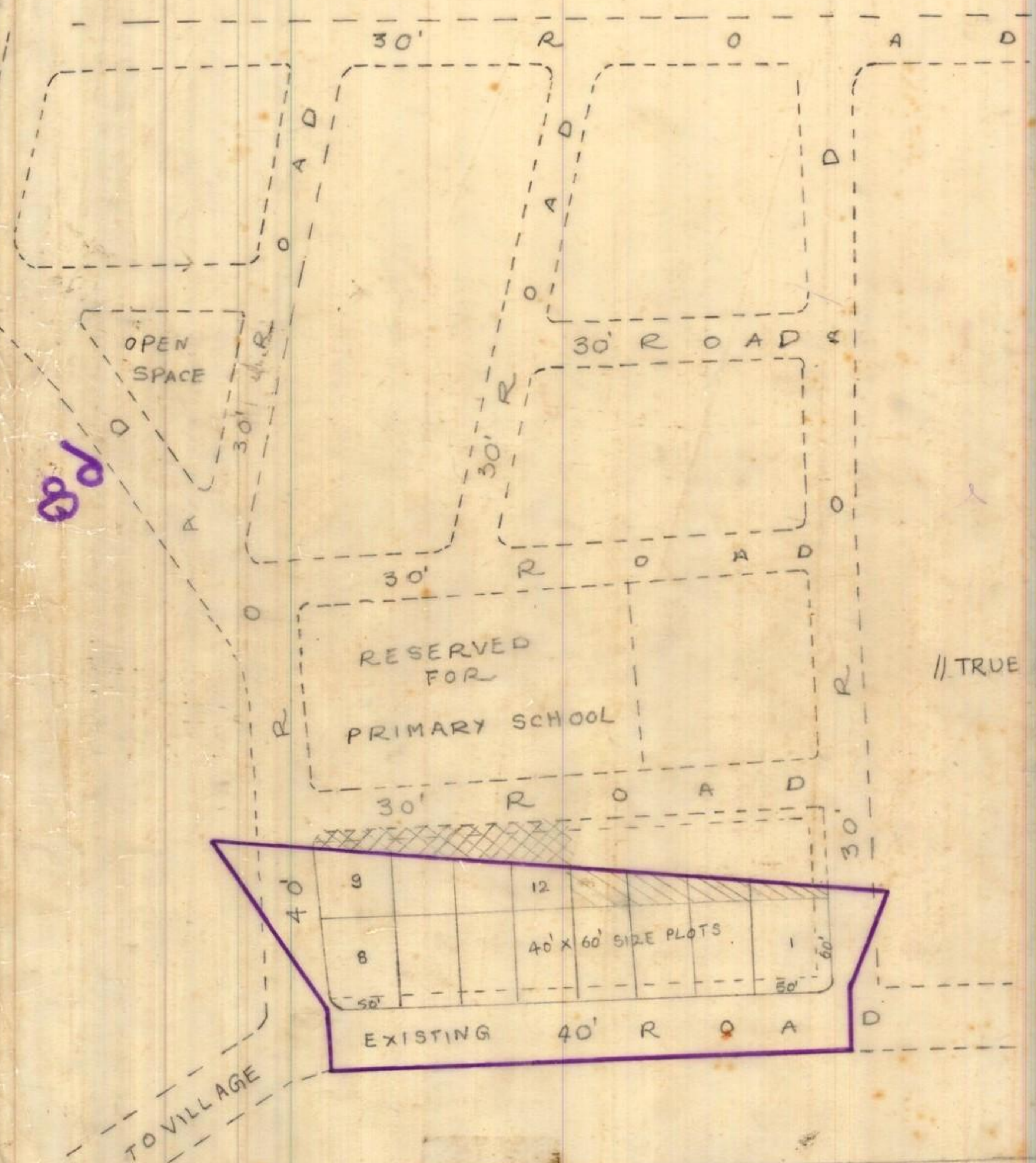
Sd/- T.S. KUMAR TPS.	Sd/- G. RAMADURGAO 6.12.86 ASST. TOWN PLANNER
Sd/- CH. RAMANADHAN A.D. 6.12.86	Sd/- K.A. ARUNACHALAM 2.12.86 ASSOCIATE PLANNER

//TRUE COPY//

 13/10/88 SURVEYOR / D/MAN	 ASST. TOWN PLANNER T
---	---

 13/10/88 JUNIOR PLANNING OFFICER	 VICE-CHAIRMAN
--	--

VISAKHAPATNAM URBAN DEVELOPMENT AUTHORITY



//TRUE COPY//